

SEWOO TECH TCP/IP Setup Utility Manual

LK-T SeriesReceipt Printer

Rev. 2.00

Table of Contents

1. Explanation.
2. How to use.
 - 2.1 TCP/IP Configuration.
 - 2.2 Ethernet firmware update.

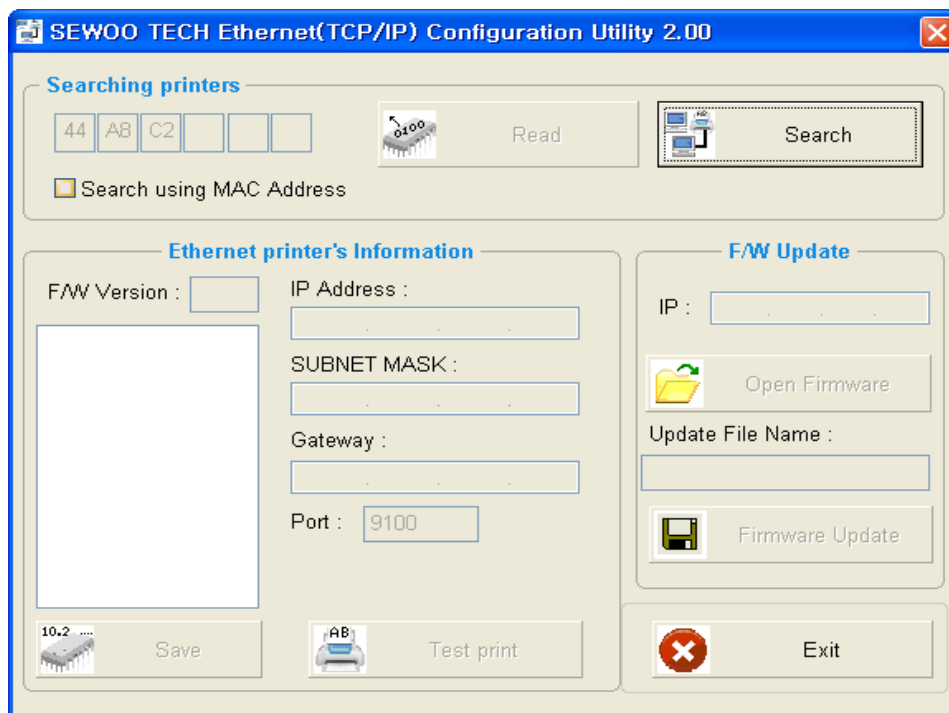
1. Explanation.

This TCP/IP Setup Utility Manual shows how to find the printer which is connected to the network and set the TCP/IP information of the printer.

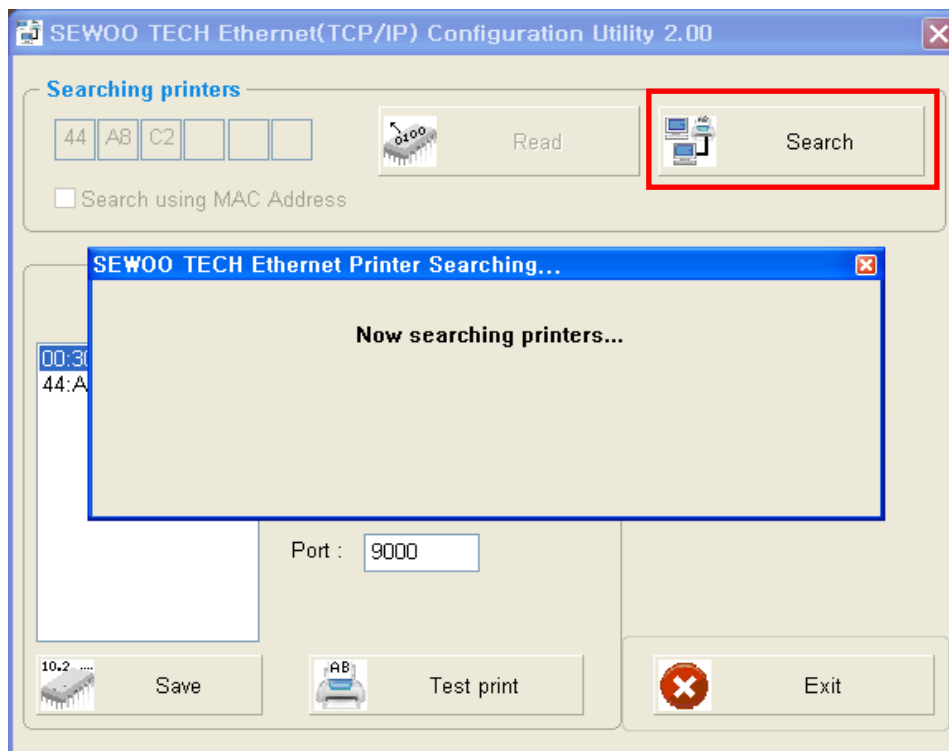
2. How to use.

2.1 TCP/IP configuration.

Execute the TCPIPConfig.exe file.



Click the "Search" button.

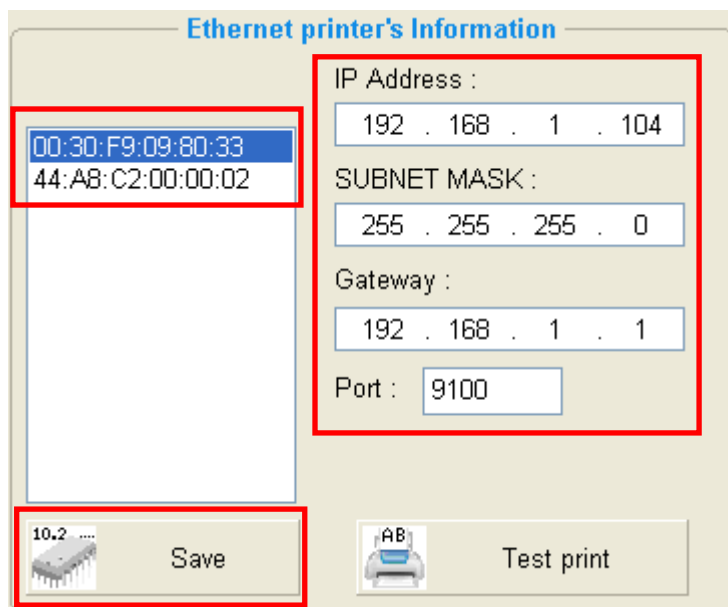


Two printer types(ATMEL & STM CPU) support different UI.

So choose the printer type on the left and enter the setup information on the right of the utility.

After entering setup information, click “Save” button.

<ATMEL CPU> [MAC Address : 00:30:F9:XX:XX:XX]



Ethernet printer's Information

MAC Address:
 00:30:F9:09:80:33
 44:A8:C2:00:00:02

IP Address :
 192 . 168 . 1 . 104

SUBNET MASK :
 255 . 255 . 255 . 0

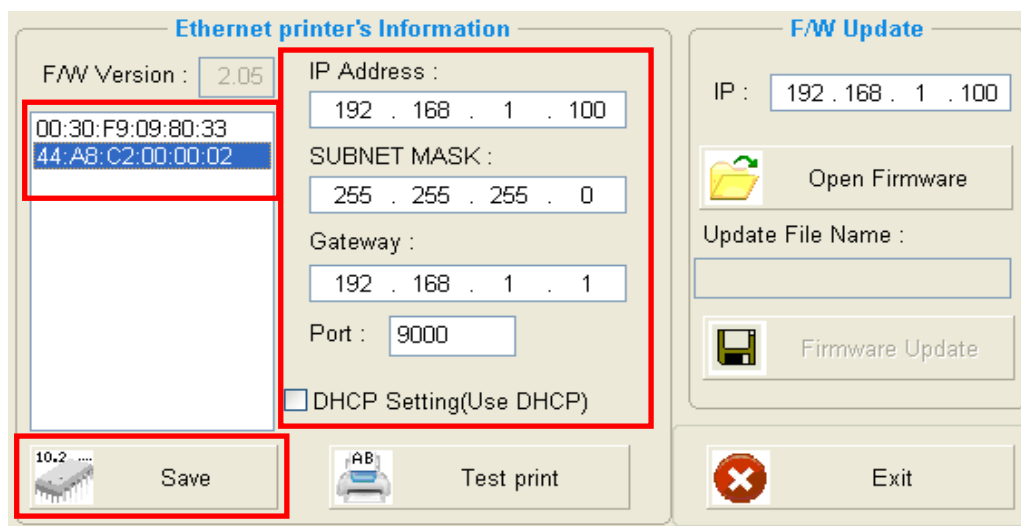
Gateway :
 192 . 168 . 1 . 1

Port : 9100

10.2 Save

AB Test print

<STM CPU> [MAC Address : 44:A8:C2:XX:XX:XX]



Ethernet printer's Information

F/W Version : 2.05

MAC Address:
 00:30:F9:09:80:33
 44:A8:C2:00:00:02

IP Address :
 192 . 168 . 1 . 100

SUBNET MASK :
 255 . 255 . 255 . 0

Gateway :
 192 . 168 . 1 . 1

Port : 9000

☐ DHCP Setting(Use DHCP)

10.2 Save

AB Test print

F/W Update

IP : 192 . 168 . 1 . 100

Open Firmware

Update File Name :

Firmware Update

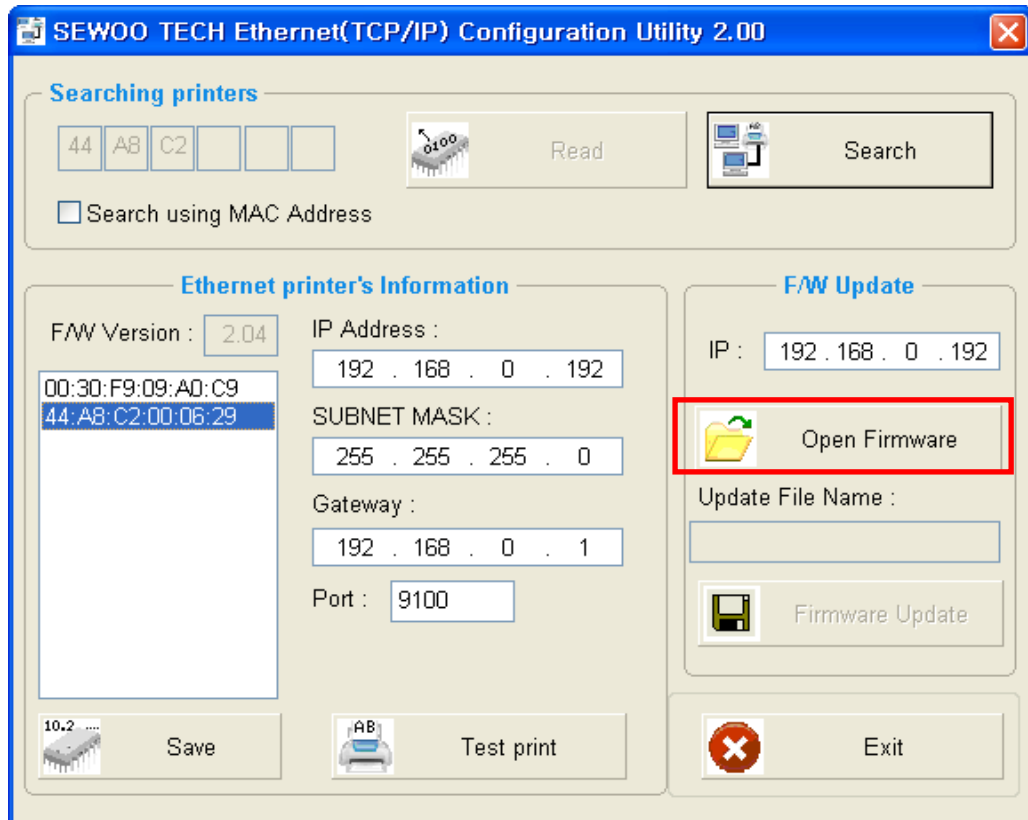
Exit

When you see the dialog message as below, click “OK” button.

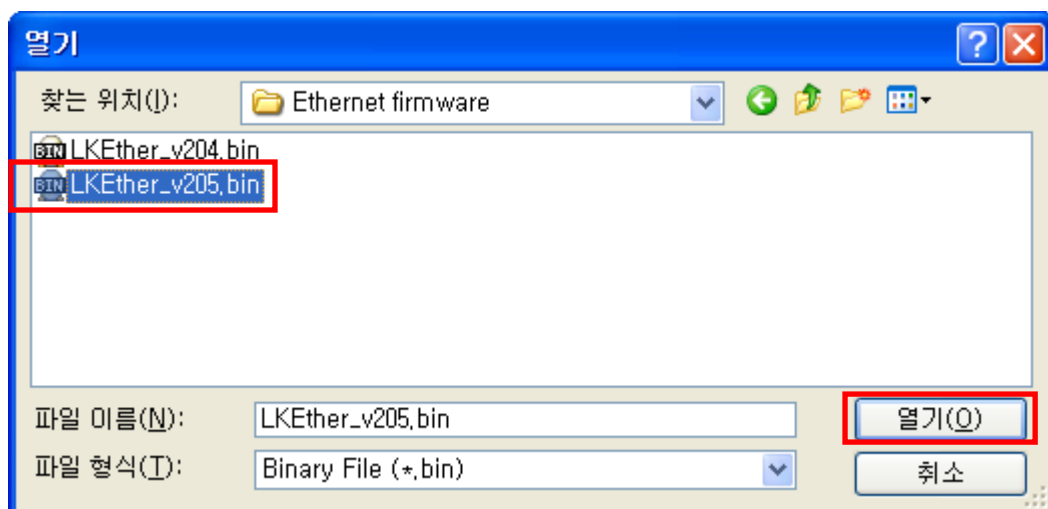


2.2 Ethernet Firmware update.

Click “Open Firmware” button.”



Choose the firmware which you want to upload and click “Open” Button.



Click "Firmware Update" Button and when the firmware uploading is completed you could see the below dialog message.

Click "OK" Button..

